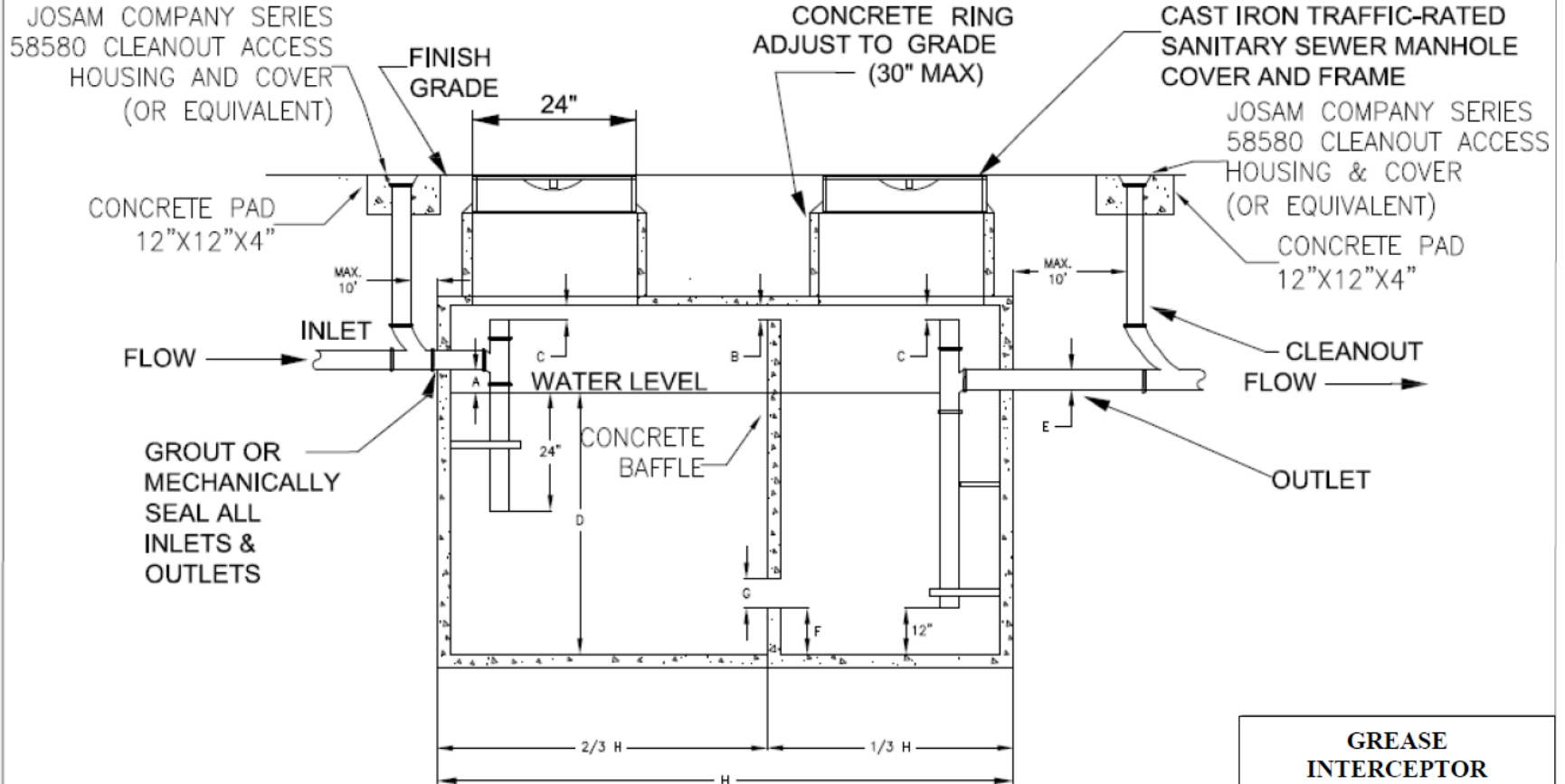


**PROPOSED INTERCEPTOR DESIGN MUST BE APPROVED
BY CUB'S DIRECTOR OF WATER SEWER PRIOR TO INSTALLATION**



- A= MINIMUM 2 1/2" ABOVE OUTLET PIPE INVERT
- B= MAXIMUM 6" BELOW INTERCEPTOR CEILING
- C= MAXIMUM 6" BELOW INTERCEPTOR CEILING
- D= WILL VARY BASED UPON INTERCEPTOR CAPACITY; MINIMUM 30"
- E= MINIMUM 4" BUT NO SMALLER THAN INLET PIPE
- F= 8" TO 16"
- G= 8" TO 12"
- H= WILL VARY BASED UPON INTERCEPTOR CAPACITY

**GREASE
INTERCEPTOR
1,000-3,000 GALLONS
DETAIL - NTS**



REVISIONS				
NO.	DR.	CHK.	DATE	DESCRIPTION
1	JB	DH	11/18/07	UPDATE SPECIFICATIONS