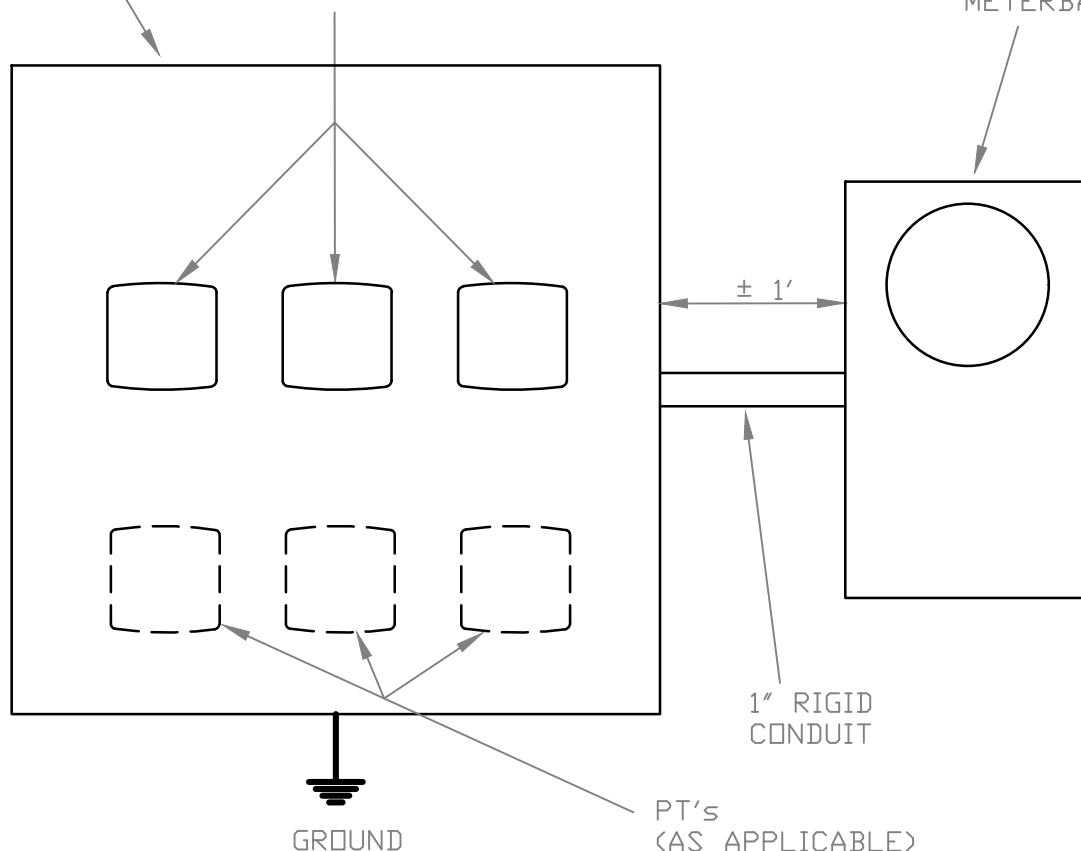


CONTRACTOR
PROVIDED
METERING
CABINET

CT's

CUB PROVIDED
METERBASE



NOTES:

1) CABINET DIMENSIONS ARE A MINIMUM OF 30"x30"x10" FOR 120/208V APPLICATIONS AND A MINIMUM OF 40"x40"x10" FOR 277/480V APPLICATIONS.

2) CABINET MUST BE LOCKABLE (RING LOCK) VIA CUB PADLOCK. PRE-INSTALLED KEY LOCK CONFIGURATIONS ARE NOT ACCEPTABLE.

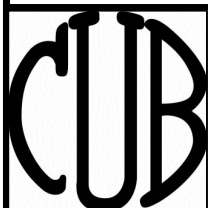
3) CT'S/PT'S (AS APPLICABLE) MUST BE PERMANENTLY MOUNTED INSIDE THE CABINET IN A UNIFORMLY ORGANIZED FASHION, ALLOWING THE WIRING TO BE NEATLY AND CLEANLY INSTALLED.

4) CUB WILL PROVIDE THE CT'S/PT'S (AS APPLICABLE) AND METERBASE. CONTRACTOR IS RESPONSIBLE FOR OBTAINING THIS EQUIPMENT FROM CUB AND INSTALLATION OF ALL ELEMENTS REQUIRED FOR SERVICE.

5) CT'S WHITE DOT IS TO FACE THE SOURCE SIDE OF THE INSTALLATION.

6) CABINET IS TO BE GROUNDED BY #2 STR CU COPPER.

7) CONTRACTOR IS TO COORDINATE SERVICE ENTRANCE INSTALLATION WITH CUB REPRESENTATIVE(S) FOR APPROVAL.



CLINTON UTILITIES BOARD
CT & PT Metering Cabinet
Specification Diagram

Rev. Date:

Submitted:

Approved:

Dec 2018

TR

EB

MET-CAB