

NOTES:

1. CUSTOMER TO INSTALL ALL ITEMS AS PER THIS DRAWING.
2. ALL WIRING UNDER MOBILE HOME, INCLUDING BRANCH CIRCUITS, MUST BE INSTALLED IN CONDUIT.
3. ALL MOBILE HOMES MUST BE INSTALLED BY A LICENSED INSTALLER TO INSURE PROPER STRUCTURAL SUPPORT AND ANCHORING. AN INSTALLATION PERMIT DECAL PLACED BY INSTALLER MUST BE PRESENT ON THE INSIDE OF THE ELECTRICAL PANEL BEFORE APPROVAL OF ELECTRIC SERVICE CAN BE GRANTED.
4. ADDITIONAL POLE HEIGHT MAY BE REQUIRED BY CUB ENGINEERING REPRESENTATIVE.
5. THE ENTIRE INSTALLATION BY CUSTOMER IS SUBJECT TO INSPECTION AND APPROVAL BY THE ELECTRICAL INSPECTOR. REQUIREMENTS BY ELECTRICAL INSPECTOR SHALL PREVAIL OVER ANY CONFLICTING REQUIREMENTS OF THIS DRAWING.

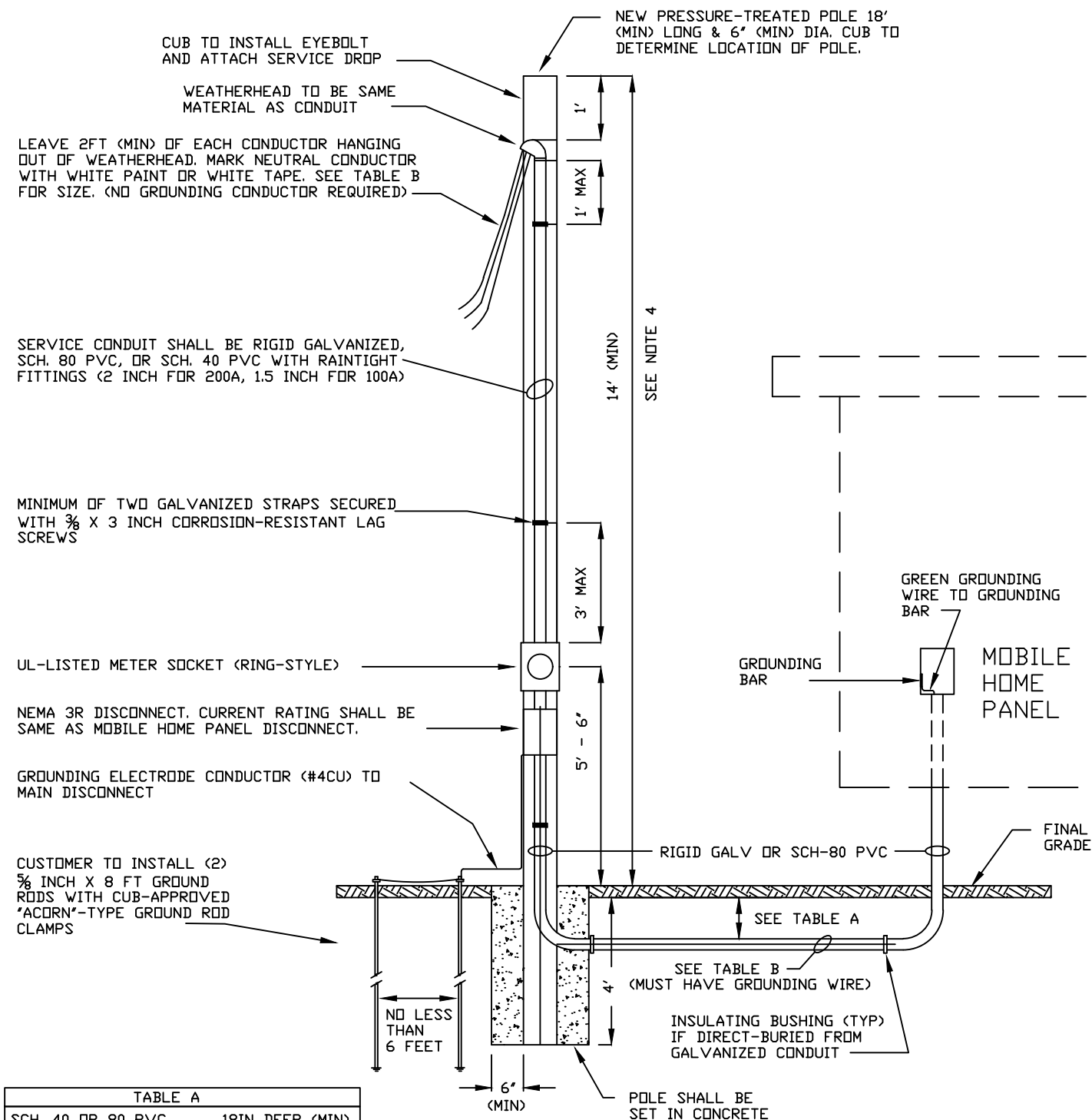


TABLE A

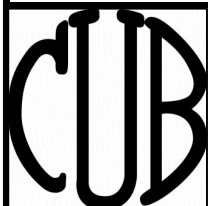
SCH. 40 OR 80 PVC	18IN DEEP (MIN)
DIRECT-BURIED CABLE	24IN DEEP (MIN)

TABLE B

4 WIRES REQUIRED TO SERVE MOBILE HOMES:	
200A -	2-#2/0CU, 1-#1/0CU NEUT, 1-#6CU GND
OR	2-#4/0AL, 1-#2/0AL NEUT, 1-#4AL GND

THIS DRAWING APPLIES TO MOBILE HOMES WITH OVERHEAD ELECTRIC.

SEE CUB DRAWING MFDH-1 FOR METER MOUNTED ON MANUFACTURED HOME WITH HUD LABEL



CLINTON UTILITIES BOARD  
Mobile Home Overhead Service Detail  
1-Phase, 3-Wire, 200A, 120/240 Volts

Rev. Date:

Nov 2018

Submitted:

DM

Approved:

EB

**SVC-MOBH**